

2025 Distinguished Career Achievement Award



Linda M. Chatters, PhD
University of Michigan

SSWR and Brown School of Social Work, Washington University in St. Louis 2025 Aaron Rosen Lecture



Leopoldo J. Cabassa, PhD
Washington University in St. Louis

2025 Social Policy Researcher Award Across an extended career of research in social policy



Alan J. Dettlaff, PhD
University of Houston

2025 SSWR AWARDS

2025 Social Policy Researcher Award

Notable recent research contributions to the study of social policy



Amy Beth Castro, PhD
University of Pennsylvania

2025 Community-Research Partnership Award

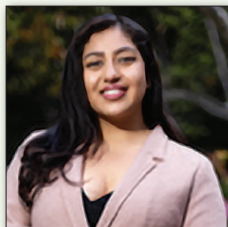


Sara Goodkind, PhD
University of Pittsburgh



Kathi Elliott, DNP
Gwen's Girls

2025 Community-Research Partnership Award Honorable Mention



Kimberly Fuentes, MSW
University of California, Los Angeles



Kim Ye, MFA
Sex Worker Outreach Project Los Angeles

2025 Book Award



Leopoldo J. Cabassa, PhD
Washington University in St. Louis

Cabassa, L. J. (2023). *Addressing Health Inequities in People with Serious Mental Illness: A Call to Action*. Oxford University Press.

2025 Book Award Honorable Mention



Rachel Forbes, MSW
University of Denver



Kelly Smith, DSW
Columbia University

Forbes, R. & Smith, K. (Eds.). (2023). *Ecosocial Work: Environmental Practice and Advocacy*. NASW Press.

2025 Deborah K. Padgett Early Career Achievement Award



Jia Xue, PhD
University of Toronto

2025 SSWR AWARDS

2025 Excellence in Research Award



Joyce Y. Lee, PhD
The Ohio State University



Shawna J. Lee, PhD
University of Michigan



Susan Yoon, PhD
The Ohio State University



Jaclyn Kirsch, PhD
The University of Texas at Arlington



Garrett T. Pace, PhD
University of Nevada, Las Vegas



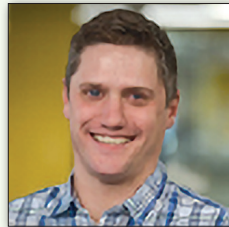
Sarah J. Schoppe-Sullivan, PhD
The Ohio State University

Lee, J. Y., Lee, S. J., Yoon, S., Kirsch, J., Pace, G. T., & Schoppe-Sullivan, S. J. (2023). Family stress processes underlying material hardship and parental detachment and warmth amongst racially diverse fathers and mothers with low income. *Journal of Family Violence*, 1-17. doi.org/10.1007/s10896-023-00583-x.

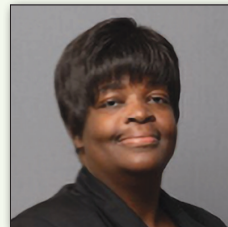
2025 Excellence in Research Award Honorable Mention



Jen Hirsch, PhD
Michigan State University



Matthew DeCarlo, PhD
Saint Joseph's University



Alexandria M. Lewis, Ed.S
University of Missouri



Cassandra Walker, MSW
Intersections Center for
Complex Healing

Hirsch, J., DeCarlo, M., Lewis, A., & Walker, C. (2023). Alternative pathways to social work licensure: A critical review and social equity policy analysis. *Journal of Evidence-Based Social Work*, 21(2), 177-198. doi.org/10.1080/26408066.2023.2284919.

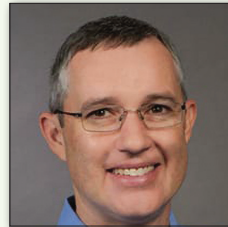
2025 Excellence in Research Award Honorable Mention



Nathaniel J. Williams, PhD
Boise State University



Steven C. Marcus, PhD
University of Pennsylvania



Mark G. Ehrhart, PhD
University of Central Florida



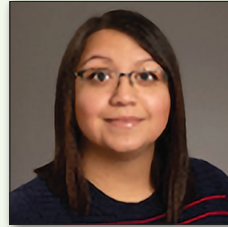
Marisa Sklar, PhD
University of California, San Diego



Susan M. Esp, PhD
Boise State University



Kristine Carandang, PhD
University of California, San Diego



Nalley Vega, MSW
Boise State University



Alexandra E. Gomes, MSW
Boise State University



Lauren Brookman-Fraze, PhD
University of California, San Diego



Gregory A. Aarons, PhD
University of California, San Diego

Williams, N.J., Marcus, S.C., Ehrhart, M.G., Sklar, M., Esp, S.M., Carandang, K., Vega, N., Gomes, A.E., Brookman-Fraze, L. and Aarons, G.A., (2023). Randomized Trial of an organizational implementation strategy to improve measurement-based Care Fidelity and Youth outcomes in Community Mental Health. *Journal of the American Academy of Child & Adolescent Psychiatry*, 63(10):991-1004. doi: 10.1016/j.jaac.2023.11.010.

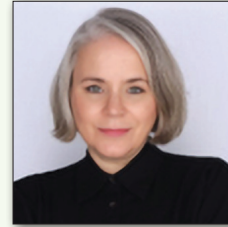
2025 SSWR AWARDS

2025 Outstanding Social Work Doctoral Dissertation Award



Cheng Ren, PhD
University of California, Berkeley

"Not All Eviction Cases are Alike: How Do Contextual and Individual Characteristics Matter? A Computational Analysis of a Decade of Court Cases from Pierce County, Washington"



Sabrina R. Cluesman, PhD
New York University

"Understanding factors related to PrEP use among Black and Latine trans and genderexpansive young people: The impact of gender minority stress, substance use, and gender affirmation"

2025 Outstanding Social Work Doctoral Dissertation Award Honorable Mention



Hyojin Cho, PhD
The University of Chicago

"The Changing Quality of Human Service Jobs in an Era of Increasing Competition and Uncertainty"

2025 Doctoral Fellows Award



Natasha M. Lee-Johnson, MSW
Louisiana State University

"Black Maternal Resilience: A Mixed Method Study Exploring Perceived Risk and Reproductive Decision-Making Among Black Women"



Aaron H. Rodwin, MSW
New York University

"Improving Recovery for Marginalized Young Adults Living with Serious Mental Illnesses Using Music-Based Self-Management Strategies: A Mixed Methods Study"